

Lock nut cylinders



30 - 1100 t
50 - 300 mm

700 bar

View product: <http://industrial.lukas.com>

For lifting the heaviest loads and supporting them for a long time

LUKAS lock nut cylinders combine the strengths of high-tonnage cylinders with a mechanical locking mechanism to prevent the load from lowering. This enables you to support bridges, the heaviest construction components, machines, transformers, etc. with up to 1,100 tonnes per cylinder for a longer period of time.

Facts:

- Long, secure hold under the heaviest loads
- Mechanical locking mechanism
- Robust and solid thanks to high-strength special steel
- Single-acting operation
- Retracts under load
- An ejection hole limits the lifting height and prevents incorrect operation
- Surface specially protected against corrosion

The greatest possible safety for you and the best protection for the cylinder can be achieved by using tilting saddles to provide a solid, secure footing when working on an uneven or soft substrate. This is the only way to ensure maximum lateral load tolerance.

Lock nut cylinders

Benefits

- Laminated-fabric guide strips for particularly high lateral load tolerance
- Standard with internationally typical screw couplers
- With optional LUKAS quick coupler for integration into an existing 500-bar system

For further information on this product, please contact us directly.

Phone number: + 49 9131 698 468

Fax number: + 49 9131 698 303

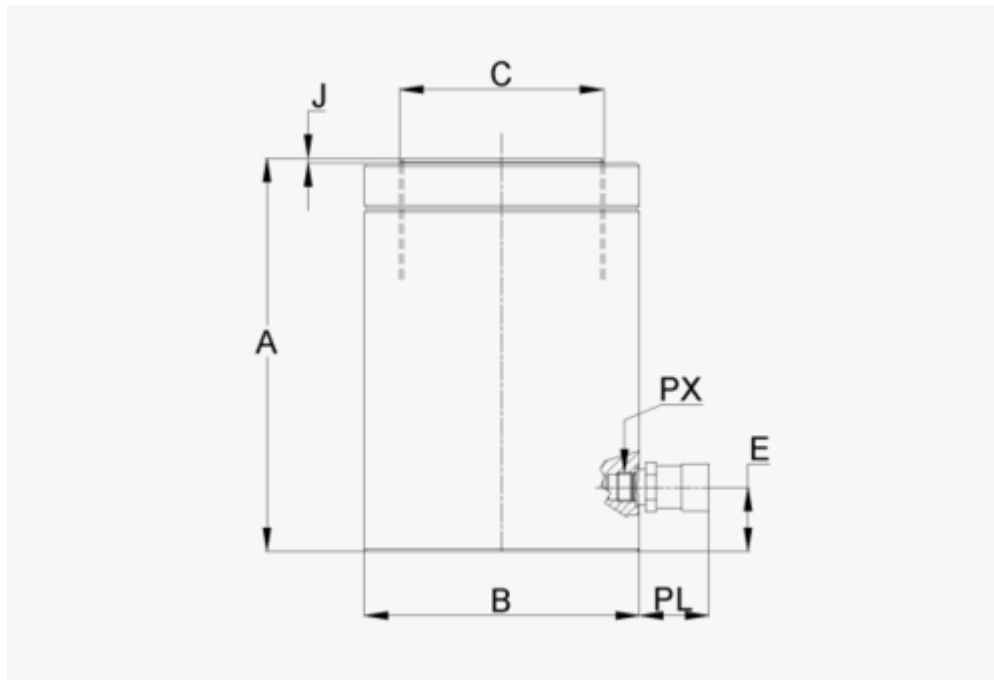
E-mail: lukas.info@idexcorp.com

Find nearest contact:

industrial.lukas.com/Service/Find+a+contact.html

> Lock nut cylinders

Technical data 700 Bar



Lock nut cylinders

Technical data 700 Bar

type (type)	order no.	lifting cap. (kN)	stroke (mm)	effective area (cm ²)	required oil cap. (l)	A (mm)	A with tilting saddle (mm)	B (Ø mm)	C (Ø mm)	E (mm)	J (mm)	PX	PL (mm)	weight (kg)
HLCN 30/50	84148/9949-50	309	50	44.15	0.22	169	194	100	Tr75x4	25	3	3/8-18 NPT	72	10.3
HLCN 30/100	84148/9949-51	309	100	44.15	0.44	219	244	100	Tr75x4	25	3	3/8-18 NPT	72	13.2
HLCN 30/200	84148/9949-52	309	200	44.15	0.88	319	344	100	Tr75x4	25	3	3/8-18 NPT	72	19.2
HLCN 30/300	84148/9949-53	309	300	44.15	1.33	419	444	100	Tr75x4	25	3	3/8-18 NPT	72	25.9
HLCN 50/50	84148/9949-54	496	50	70.84	0.36	155	182	125	Tr95x4	25	3	3/8-18 NPT	72	15
HLCN 50/100	84148/9949-55	496	100	70.84	0.71	205	232	125	Tr95x4	25	3	3/8-18 NPT	72	20
HLCN 50/200	84148/9949-56	496	200	70.84	1.42	310	337	125	Tr95x4	25	3	3/8-18 NPT	72	30
HLCN 50/300	84148/9949-57	496	300	70.84	2.13	415	442	125	Tr95x4	25	3	3/8-18 NPT	72	40
HLCN 100/50	84148/9949-58	929	50	132.6	0.66	180	213	170	Tr130x6	30	3	3/8-18 NPT	72	31
HLCN 100/100	84148/9949-59	929	100	132.6	1.33	230	263	170	Tr130x6	30	3	3/8-18 NPT	72	40
HLCN 100/200	84148/9949-60	929	200	132.6	2.65	335	386	170	Tr130x6	30	3	3/8-18 NPT	72	59
HLCN 100/300	84148/9949-61	929	300	132.6	3.98	440	473	170	Tr130x6	30	3	3/8-18 NPT	72	78
HLCN 140/50	84148/9949-62	1407	50	200.9	1.01	201	224	200	Tr160x6	35	3	3/8-18 NPT	72	49
HLCN 140/100	84148/9949-63	1407	100	200.9	2.01	251	274	200	Tr160x6	35	3	3/8-18 NPT	72	61
HLCN 140/200	84148/9949-64	1407	200	200.9	4.02	361	384	200	Tr160x6	35	3	3/8-18 NPT	72	88

Lock nut cylinders

type (type)	order no.	lifting cap. (kN)	stroke (mm)	effective area (cm ²)	required oil cap. (l)	A (mm)	A with tilting saddle (mm)	B (Ø mm)	C (Ø mm)	E (mm)	J (mm)	PX	PL (mm)	weight (kg)
HLCN 140/300	84148/9949-65	1407	300	200.9	6.03	471	494	200	Tr160x6	35	3	3/8-18 NPT	72	115
HLCN 220/50	84148/9949-66	2199	50	314.1	1.57	208	250	250	Tr200x6	40	3	3/8-18 NPT	72	79
HLCN 220/150	84148/9949-67	2199	150	314.1	4.71	318	360	250	Tr200x6	40	3	3/8-18 NPT	72	121
HLCN 220/250	84148/9949-68	2199	250	314.1	7.85	433	475	250	Tr200x6	40	3	3/8-18 NPT	72	165
HLCN 350/50	84148/9949-69	3436	50	490.6	2.5	238	282	310	Tr250x6	50	5	3/8-18 NPT	72	139
HLCN 350/150	84148/9949-70	3436	150	490.6	7.36	348	392	310	Tr250x6	50	5	3/8-18 NPT	72	204
HLCN 350/250	84148/9949-71	3436	250	490.6	12.27	458	502	310	Tr250x6	50	5	3/8-18 NPT	72	269
HLCN 560/50	84148/9949-72	5629	50	803.8	4.02	285	332	390	Tr320x6	65	5	3/8-18 NPT	72	263
HLCN 560/150	84148/9949-73	5629	150	803.8	12.06	400	447	390	Tr320x6	65	5	3/8-18 NPT	72	370
HLCN 560/250	84148/9949-74	5629	250	803.8	20.1	515	562	390	Tr320x6	65	5	3/8-18 NPT	72	478
HLCN 880/50	84148/9949-75	8756	50	1256	6.28	325	395	490	Tr400x6	70	5	3/8-18 NPT	72	474
HLCN 880/150	84148/9949-76	8756	150	1256	18.84	440	510	490	Tr400x6	70	5	3/8-18 NPT	72	643
HLCN 880/250	84148/9949-77	8756	250	1256	31.4	555	625	490	Tr400x6	70	5	3/8-18 NPT	72	813
HLCN 1100/50	84148/9949-78	11132	50	1589.6	7.95	340	460	550	Tr450x6	80	5	3/8-18 NPT	72	681
HLCN 1100/150	84148/9949-79	11132	150	1589.6	23.85	485	605	550	Tr450x6	80	5	3/8-18 NPT	72	894

 **Lock nut cylinders**

type (type)	order no.	lifting cap. (kN)	stroke (mm)	effective area (cm ²)	required oil cap. (l)	A (mm)	A with tilting saddle (mm)	B (Ø mm)	C (Ø mm)	E (mm)	J (mm)	PX	PL (mm)	weight (kg)
HLCN 1100/250	84148/9949-80	11 132	250	1589.6	39.74	600	720	550	Tr450x6	80	5	3/8-18 NPT	72	1 107

Cylinder type HLCN can be retrofitted with plug couplers and integrated in LUKAS 50 Mpa-systems.



Germany's finest hydraulics

LUKAS – the name in hydraulic tools.

High-quality hydraulic tools for industrial applications: LUKAS has developed and produced them in Germany since 1948. Wherever you need to move heavy loads, with our products you have a strong partner at your side. Only LUKAS offers these advantages:

German quality

With few exceptions, LUKAS products are developed and manufactured from start to finish in Germany. That is the only way we can maintain our high standard of quality and monitor our entire production chain. Our highly skilled team works with great attention to detail - and is always a step closer to our customers.



The original

In 1948, LUKAS was the first brand to offer high-quality hydraulic tools for industrial applications. Since then our engineers have always kept a step ahead of developments so we can offer the guaranteed best quality.

Unique customer focus

LUKAS is the only manufacturer to offer you customer-oriented direct sales. Our experienced sales team can give you excellent advice because they understand your needs and can offer you tailored solutions.