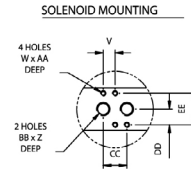
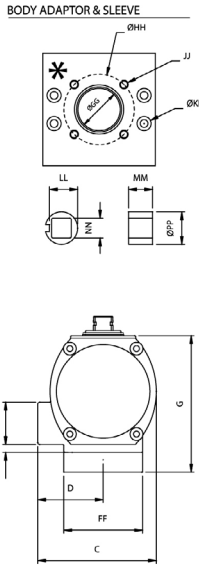
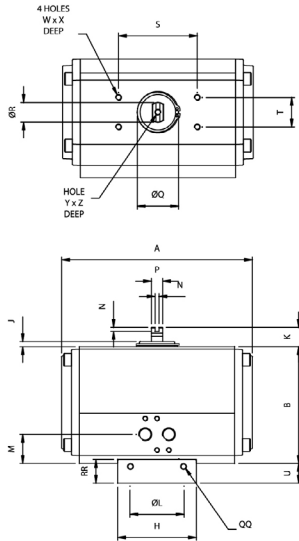


TruTorq Pneumatik Antrieb Typ E, Metrisch Größe 8, 12, 20, 35, 55, 70, 100 und 150

- Doppelt- (DA) und Einfachwirkend (SR)
- beidseitige Drehwinkelbegrenzung Pos. AUF und ZU
- Variable Adapterplatte 4 kant, 2 Flach oder rund mit Feder
- Variabler Lochkreis
- Passend für alle Armaturen mit ebenem Aufbauflansch



Abmessungen (mm)

Antriebsgröße	ISO	A	B	C	D	E	F	G	H	J	K	ØL	M	N	P	ØQ	ØR	S	T	U	V
TT 8	F05/F07	162,0	109,0	105,0	57,0	42,0	7,5	127,0	80,0	5,0	20,0	35,0	27,0	4,0	11,5	35,0	20,0	80,0	30,0	18,0	12,0
TT 8	F07	162,0	109,0	105,0	57,0	42,0	7,5	127,0	80,0	5,0	20,0	35,0	27,0	4,0	11,5	35,0	20,0	80,0	30,0	18,0	12,0
TT 12	F05/F07	194,0	118,5	121,0	67,0	43,0	8,0	138,5	80,0	5,5	20,0	35,0	29,5	4,0	11,5	46,0	20,0	80,0	30,0	20,0	12,0
TT 12	F07	194,0	118,5	121,0	67,0	43,0	8,0	138,5	80,0	5,5	20,0	35,0	29,5	4,0	11,5	46,0	20,0	80,0	30,0	20,0	12,0
TT 20	F07	218,0	140,5	136,5	72,0	43,0	8,0	164,5	90,0	6,5	20,0	55,0	29,5	4,0	19,0	50,0	32,0	80,0	30,0	24,0	12,0
TT 35	F07/F10	266,0	166,5	156,0	78,0	43,0	8,5	196,7	120,0	7,0	30,0	55,0	30,0	4,0	19,0	61,0	32,0	80,0	30,0	30,2	12,0
TT 35	F10	266,0	166,5	156,0	78,0	43,0	8,5	196,7	120,0	7,0	30,0	55,0	30,0	4,0	19,0	61,0	32,0	80,0	30,0	30,2	12,0
TT 55	F10/F12	312,0	207,5	191,0	95,5	43,0	20,5	242,5	140,0	7,5	30,0	85,0	42,0	4,0	25,4	61,0	40,0	130,0	30,0	35,0	12,0
TT 55	F12/F10	312,0	207,5	191,0	95,5	43,0	20,5	242,5	140,0	7,5	30,0	85,0	42,0	4,0	25,4	61,0	40,0	130,0	30,0	35,0	12,0
TT 70	F10/F12	340,0	211,0	191,0	95,5	43,0	20,5	247,0	140,0	7,0	30,0	85,0	42,0	4,0	25,4	72,0	40,0	130,0	30,0	36,0	12,0
TT 70	F12/F10	340,0	211,0	191,0	95,5	43,0	20,5	247,0	140,0	7,0	30,0	85,0	42,0	4,0	25,4	72,0	40,0	130,0	30,0	36,0	12,0
TT 100	F14	361,0	253,3	227,0	113,5	43,0	39,5	303,0	160,0	7,0	30,0	100,1	61,0	4,0	25,4	78,0	40,0	130,0	30,0	49,8	12,0
TT 150	F14	390,0	302,0	280,0	140,0	43,0	56,5	351,0	160,0	7,0	30,0	100,1	78,0	4,0	25,4	78,0	40,0	130,0	30,0	49,0	12,0

Antriebsgröße	ISO	W	X	Y	Z	AA	BB	CC	DD	EE	FF	ØGG	ØHH	JJ	ØKK	LL	MM	NN	ØPP	QQ	RR
TT 8	F05/F07	M5	5,0	M6	12,0	8,0	G1/8"	24,0	16,0	32,0	79,0	30,0	50,0	M6	5,5	20,0	17,0	14,0	23,0	M5	22,0
TT 8	F07	M5	5,0	M6	12,0	8,0	G1/8"	24,0	16,0	32,0	79,0	47,0	70,0	M8	5,5	29,5	17,0	17,0	33,0	M6	24,0
TT 12	F05/F07	M5	5,0	M6	12,0	8,0	G1/4"	24,0	16,0	32,0	79,0	30,0	50,0	M6	5,5	20,0	17,0	14,0	23,0	M5	22,0
TT 12	F07	M5	5,0	M6	12,0	8,0	G1/4"	24,0	16,0	32,0	79,0	47,0	70,0	M8	5,5	29,5	17,0	17,0	33,0	M6	24,0
TT 20	F07	M5	5,0	M6	12,0	8,0	G1/4"	24,0	16,0	32,0	89,9	46,0	70,0	M8	6,6	29,5	20,0	17,0	33,0	M8	28,0
TT 35	F07/F10	M5	5,0	M6	12,0	8,0	G1/4"	24,0	16,0	32,0	119,9	46,0	70,0	M8	9,0	29,5	20,0	17,0	33,0	M10	34,0
TT 35	F10	M5	5,0	M6	12,0	8,0	G1/4"	24,0	16,0	32,0	119,9	61,0	102,0	M10	9,0	39,0	25,0	22,0	44,0	M10	34,0
TT 55	F10/F12	M5	5,0	M6	12,0	8,0	G1/4"	24,0	16,0	32,0	139,9	61,0	102,0	M10	11,0	50,0	25,0	22,0	55,0	M10	40,0
TT 55	F12/F10	M5	5,0	M6	12,0	8,0	G1/4"	24,0	16,0	32,0	139,9	75,0	125,0	M12	11,0	50,0	25,0	27,0	55,0	M10	40,0
TT 70	F10/F12	M5	5,0	M6	12,0	8,0	G1/4"	24,0	16,0	32,0	139,9	61,0	102,0	M10	11,0	50,0	25,0	22,0	55,0	M10	40,0
TT 70	F12/F10	M5	5,0	M6	12,0	8,0	G1/4"	24,0	16,0	32,0	139,9	75,0	125,0	M12	11,0	50,0	25,0	27,0	55,0	M10	40,0
TT 100	F14	M5	5,0	M6	12,0	8,0	G1/4"	24,0	16,0	32,0	159,9	88,0	140,0	M16	14,0	62,5	35,0	36,0	68,0	M14	57,0
TT 150	F14	M5	5,0	M6	12,0	8,0	G1/4"	24,0	16,0	32,0	159,9	88,0	140,0	M16	14,0	62,5	35,0	36,0	68,0	M14	57,0



TruTorq Pneumatik Antrieb Typ E, Metrisch Größe 8, 12, 20, 35, 55, 70, 100 und 150

Drehmoment

Antriebs-Größe	Luftdruck	DA Drehm. Nm	SR Drehmoment (Nm)				
	BAR		Luft - Start	Luft- Ende	Feder - Start	Feder - Ende	Feder Anzahl
TT 8	6	90	58	32	57	31	4+4
TT 12	6	122	79	44	78	43	4+4
TT 20	6	202	130	71	130	132	4+4
TT 35	6	374	241	133	241	132	4+4
TT 55	6	597	385	212	384	211	4+4
TT 70	6	824	533	294	531	292	4+4
TT 100	6	1122	725	399	723	398	4+4
TT 150	6	1655	1069	589	1066	586	4+4

Technische Daten

Antriebs-Größe	Schaltzeit (sek)*				Luftverbrauch (Liter)		Gewicht (kg)	
	DA AUF	DA ZU	SR AUF	SR ZU	AUF	ZU	DA	SR
TT 8	< 1	< 1	< 1	< 1	0,34	0,41	3,1	3,4
TT 12	1,5	1,5	1,5	1,0	0,49	0,64	4,5	5,2
TT 20	2,0	2,0	2,0	1,5	0,90	1,00	6,3	7,0
TT 35	2,5	2,5	2,5	2,0	1,69	1,90	10,5	12,0
TT 55	3,5	3,5	3,5	3,0	2,80	3,40	18,2	20,6
TT 70	4,0	4,0	4,0	3,0	3,05	3,70	22,4	26,5
TT 100	4,5	4,5	5,5	3,0	5,52	5,90	31,2	35,8
TT 150	5,0	5,0	7,0	4,0	7,60	9,60	44,4	52,8

* Achtung! Auch abhängig vom Durchmesser der Versorgungsleitung und Ausführung des Steuerventils