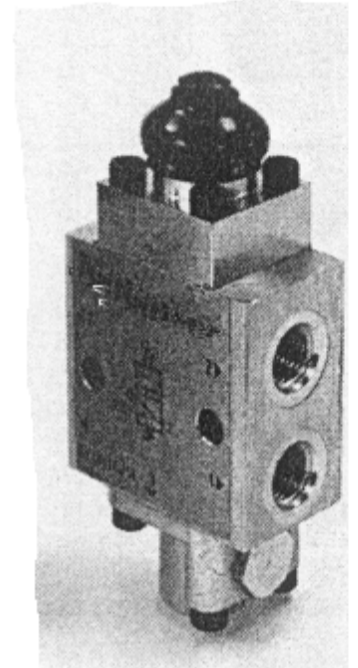


**3/2 Heavy Duty Poppet Valves  
Mechanically Actuated  
G<sup>1</sup>/<sub>4</sub>**

- Very rugged, heavy duty valves
- Corrosion resistant construction
- Dustproof
- Adjustable lever operators, may be rotated at 90° intervals
- Integral alternative ports



**Technical Data**

Medium:  
Compressed air, filtered, lubricated and non-lubricated

Operation:  
Poppet valve, directly actuated

Mounting:  
Through-holes in valve body

Port Size:  
G<sup>1</sup>/<sub>4</sub>

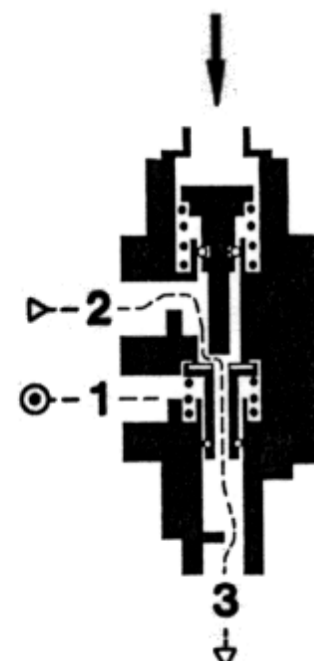
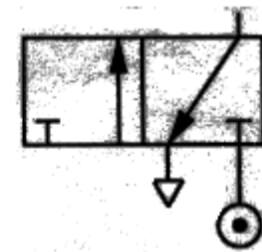
Operating Pressure:  
0,7 - 10 bar normally closed  
0,7 - 7 bar normally open

Flow (to CETOP RP50P):  
'C' - Conductance dm<sup>3</sup>/s/bar 3,50  
'b' - Critical pressure ratio 0,21  
Cv 0,87

Operating Temperature:  
+5°C to +75°C

**Materials**

Brass body and poppet, brass or stainless steel operator, stainless steel roller, steel plunger, nitrile rubber seals.



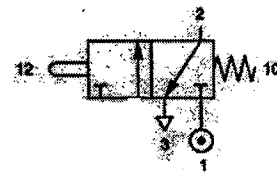
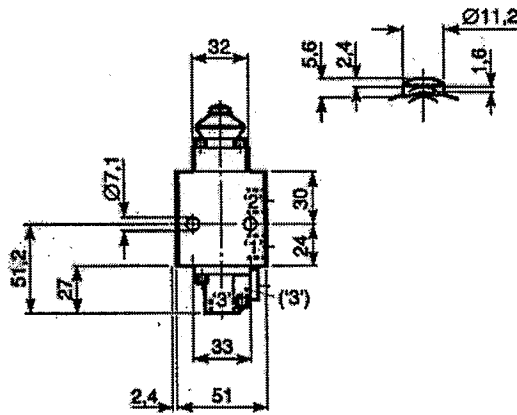
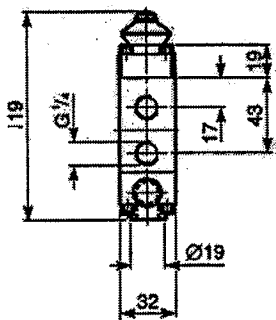
General Information

Model	Type	Operator	Return	Weight (kg)	Spares kit
A1011	Normally closed*	Plunger	Spring	0,81	A1074

Warning

These products are intended for use in industrial compressed air systems only. Do not use these products where pressures and temperatures can exceed those listed under 'Technical Data'.

Plunger Actuated, Spring Return

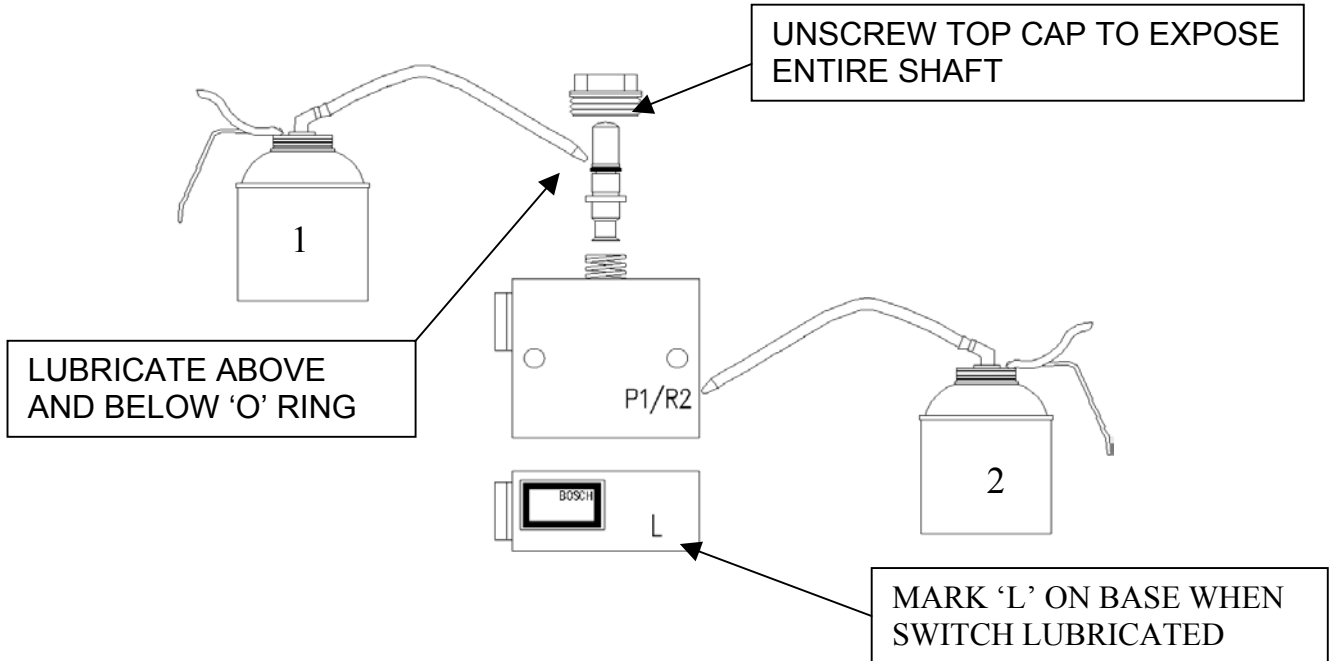


Model Number: A1011  
 Type: 3/2  
 Operating Force: 25 N  
 Pre-travel: 2,4 mm exhaust seat closes  
 Operating Travel: 1,6 mm  
 Total movement of valve including over-travel: 5,6 mm  
 Exhaust port may be rotated through 360° at 90° intervals.

# PROCEDURE FOR LUBRICATION OF LIMIT SWITCHES

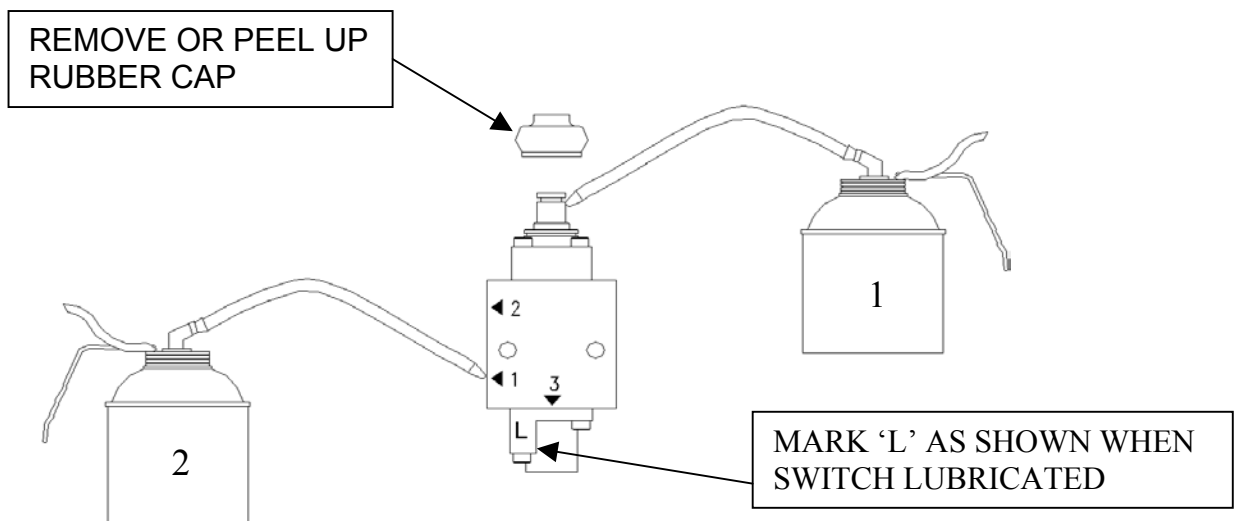
**FOR ALL VALVES AND SPARES**, LUBRICATE THE SWITCHES DURING ASSEMBLY AND BEFORE PUTTING AIR THROUGH THE PNEUMATICS.  
USE A MEDIUM VISCOSITY MINERAL OIL (IE. ROCOL SAPPHIRE HI-TORQUE 320)

## A2033 & A2347



- 1) PUT A FEW DROPS OF LUBRICANT ON THE OPERATIONAL PIN SHAFT
- 2) PUT A FEW DROPS OF LUBRICANT INTO THE AIR INLET PORT (P1/R2)

## A1011



- 1) PUT A FEW DROPS OF LUBRICANT ON THE OPERATIONAL PIN SHAFT
- 2) PUT A FEW DROPS OF LUBRICANT INTO THE AIR INLET PORT (1)