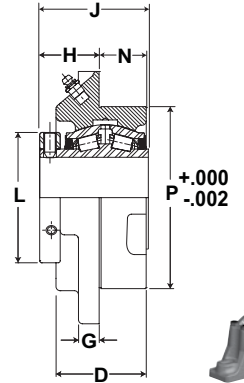
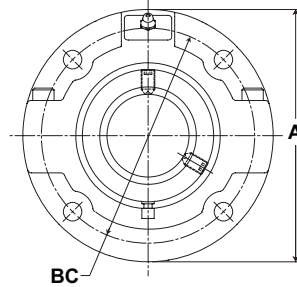




- Rolling Elements:** Tapered Roller
- Housing:** Cast Iron Piloted Flange
- Self Alignment:** +/- 3 Degrees
- Lock:** Setscrew, Single Collar
- Seal:** Felt
- Optional Seal:** Single Lip Contact
- Temperature:** -20°F to 220°F



Mtd. Tapered Bearings



RFP Series Piloted Flange Cartridge Units - Single Lock Collar

Bore Diameter		Part No.	Bearing Insert No.	Basic Dynamic Rating lb/N	Dimensions inch / mm										Unit Wt. lb/kg
					A	B.C.	D	G	H	J	L	N	P	Bolt Size	
inch	mm														
1 3/16		RFPA-103	RCIA-103	2975	5	4 1/8	1 3/4	7/16	1 5/16	2 3/8	2 1/4	7/8	3 3/8	3/8	5.5
1 1/4		RFPA-104	RCIA-104	13233	127.0	104.8	44.5	11.1	33.3	60.3	57.2	22.2	85.7	3/8	2.49
1 3/8		RFPA-106	RCIA-106	4760	5 1/4	4 3/8	2	1/2	1 1/2	2 17/32	2 5/8	15/16	3 5/8	3/8	6.8
1 7/16		RFPA-107	RCIA-107	21174	133.4	111.1	50.8	12.7	38.1	64.3	66.7	23.8	92.1	3/8	3.08
1 1/2		RFPA-108	RCIA-108	6140	6 1/8	5 1/8	2 1/4	1/2	1 9/16	2 27/32	2 7/8	1 1/8	4 1/4	7/16	10.1
1 5/8		RFPA-110	RCIA-110	27312	155.6	130.2	57.2	12.7	39.7	72.2	73.0	28.6	108.0	7/16	4.58
1 11/16		RFPA-111	RCIA-111												
1 3/4	45	RFPA-112	RCIA-112												
1 15/16	45	RFPA-45MM	RCI-45MM	8070	6 3/8	5 3/8	2 5/16	9/16	1 9/16	2 61/64	3 1/4	1 9/16	4 1/2	7/16	11.6
	50	RFPA-115	RCIA-115	35897	161.9	136.5	58.7	14.3	39.7	75.0	82.6	39.7	114.3	7/16	5.26
	50	RFPA-50MM	RCI-50MM												
2	55	RFPA-200	RCIA-200												
2 3/16	55	RFPA-55MM	RCI-55MM	8570	7 1/8	6	2 1/2	9/16	1 11/16	3 1/8	3 5/8	1 5/16	5	1/2	14.5
	55	RFPA-203	RCIA-203	38121	181.0	152.4	63.5	14.3	42.9	79.4	92.1	33.3	127.0	1/2	6.58
2 1/4	60	RFPA-204	RCIA-204												
2 7/16	60	RFPA-60MM	RCI-60MM	9030	7 5/8	6 1/2	2 3/4	5/8	1 13/16	3 5/16	3 15/16	1 7/16	5 1/2	1/2	19
	60	RFPA-207	RCIA-207	40167	193.7	165.1	69.9	15.9	46.0	84.1	100.0	36.5	139.7	1/2	8.62
	60	RFPA-208	RCIA-208												
2 1/2	65	RFPA-65MM	RCI-65MM												
2 11/16	70	RFPA-211	RCIA-211												
	70	RFPA-212	RCIA-212												
2 15/16	70	RFPA-70MM	RCI-70MM	9630	8 3/4	7 1/2	2 7/8	3/4	2	3 11/16	4 23/32	1 9/16	6 3/8	5/8	26.7
	70	RFPA-215	RCIA-215	42836	222.3	190.5	73.0	19.1	50.8	93.7	119.9	39.7	161.9	5/8	12.11
	70	RFPA-215	RCIA-215												
3	75	RFPA-75MM	RCI-75MM												
3	75	RFPA-300	RCIA-300												
3 3/16	80	RFPA-80MM	RCI-80MM												
	80	RFPA-303	RCIA-303												
	80	RFPA-304	RCIA-304												
3 7/16	85	RFPA-85MM	RCI-85MM	15320	10 1/4	8 5/8	3 3/8	7/8	2 7/16	4 3/16	5 7/16	1 5/8	7 3/8	3/4	42.6
	85	RFPA-307	RCIA-307	68147	260.4	219.1	85.7	22.2	61.9	106.4	138.1	41.3	187.3	3/4	19.32
	85	RFPA-308	RCIA-308												
3 1/2	90	RFPA-90MM	RCI-90MM												
3 1/2	95	RFPA-95MM	RCI-95MM												
3 15/16	100	RFPA-315	RCIA-315												
	100	RFPA-100MM	RCI-100MM	20980	10 7/8	9 3/8	4 3/8	15/16	2 11/16	5 1/4	5 15/16	2 7/16	8 1/8	3/4	55.2
	100	RFPA-400	RCIA-400	93324	276.2	238.1	111.1	23.8	68.3	133.4	150.8	61.9	206.4	3/4	25.04
4	105	RFPA-105MM	RCI-105MM												
4 7/16	110	RFPA-407	RCIA-407	25750	13 1/2	11 3/4	4 5/8	1	3 1/32	5 1/2	6 13/32	2 3/8	10 1/4	3/4	91
	110	RFPA-408	RCIA-408	114542	342.9	298.5	117.5	25.4	77.0	139.7	162.7	60.3	260.4	3/4	41.28
4 1/2	115	RFPA-415	RCIA-415												
4 15/16	120	RFPA-415	RCIA-415	35520	14 3/4	12 3/4	5 3/8	1 1/4	2 31/32	6 13/64	7 13/32	2 7/8	11	7/8	115
	125	RFPA-500	RCIA-500	158001	374.7	323.9	136.5	31.8	75.4	157.6	188.1	73.0	279.4	7/8	52.16
5	125	RFPA-500	RCIA-500												