

- >> MOVING IRON
- >> RECTIFIED MOVING COIL
- >> FREQUENCY METERS
- >> PHASE SEQUENCE INDICATORS
- >> NULL VOLTMETERS

- >> WATTMETERS
- >> VARMEETERS

Shortform Catalogue

ELTIME CONTROLS

Global Suppliers of Measurement and Protection Equipment for Industry

- >> ELECTROMECHANICAL HOURMETERS
- >> LCD HOURMETERS
- >> KWH METERS
- >> MAXIMUM DEMAND METERS
- >> COUNTERS
- >> DIRECT READING KWH METERS
- >> LDA-C MULTIFUNCTION MONITORS
- >> DIGITAL TRIP UNITS
- >> LDA-C MULTIFUNCTION MONITORS
- >> CURRENT TRANSFORMERS
- >> SPLIT CORE CURRENT TRANSFORMERS
- >> SWITCHBOARD SHUNTS
- >> E-SERIES TRANSDUCERS
- >> ANALOGUE SIGNAL CONDITIONERS
- >> ELECTRONIC PROTECTION RELAYS
- >> EARTH LEAKAGE RELAYS
- >> CORE BALANCE TRANSFORMERS
- >> MULTIFUNCTION TIME RELAYS
- >> SLIMLINE ELECTRONIC TIMERS
- >> ELECTRONIC TIMERS
- >> ROTARY SELECTOR SWITCHES
- >> TIMESWITCHES
- >> MINI-DISBARS

www.etime.co.uk

Welcome to Eltime Controls

Since being founded in 1979, Eltime Controls has grown to become a leading global manufacturer and supplier of measuring instrumentation, control and protection products for industry. Based in the UK, we supply products throughout the world, specialising in the electrical control panel and switchboard industry.

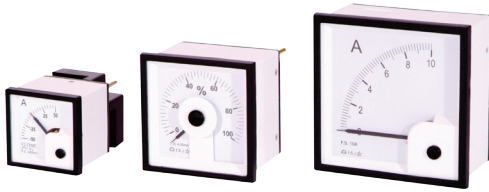
With our modern, fully equipped manufacturing plant and staff expertise, we work closely with our customers to develop innovative quality products at competitive prices, to meet the expanding needs of the measurement industry.

All Eltime products are designed, developed and manufactured to ISO9001:2008 quality control and carry a full two year guarantee. Extensive stocks of most products are held, which when coupled with our manufacturing base, enables a high level of customer service and fast delivery on all orders.

Join our growing list of world-wide customers...

- 
- Australia
 - Belgium
 - Brazil
 - Canada
 - Colombia
 - Cyprus
 - Denmark
 - Egypt
 - France
 - Germany
 - Greece
 - Hong Kong
 - India
 - Indonesia
 - Ireland
 - Italy
 - Japan
 - Korea
 - Kuwait
 - Malaysia
 - Malta
 - Mauritius
 - Mexico
 - Netherlands
 - New Zealand
 - Nigeria
 - Oman
 - Pakistan
 - Peru
 - Philippines
 - Portugal
 - Saudi Arabia
 - Singapore
 - South Africa
 - Spain
 - Sri Lanka
 - Sweden
 - Syria
 - Turkey
 - Uganda
 - U.A.E.
 - United Kingdom
 - United States
 - Vietnam
 - West Indies

DIN Square Measuring Instruments



Product Features

- DIN square 48mm, 72mm or 96mm sizes
- 90° shortscale or 240° longscale versions
- Available to measure A~, V~, A, V, Hz, W, Var, cosØ, h or kWh
- Customer special scaleplates available

DIN Square measuring instruments are available in three DIN square sizes, 48mm, 72mm or 96mm, to measure a wide range of electrical parameters including Amps, Volts, Frequency, Power (Watts or Vars), Power Factor, Hours Run, Energy (kWh) and Maximum Demand. Most instruments have interchangeable scaleplates and many further options are available to meet specific requirements of industrial applications.

Hours Run Meters



Product Features

- Electromechanical or LCD display
- DIN square 48mm, 72mm or 96mm or 48x24mm sizes
- Panel mounting or DIN rail/surface mounting
- Reset available on LCD versions

Hours run meters are suitable for monitoring equipment and scheduling of events, being ideal for recording running time, maintenance intervals or machine utilisation. An electromechanical display or LCD display with non-volatile memory, ensures the count is retained in the event of power loss. They are available in several sizes of DIN enclosure and are available to operate on a comprehensive variety of supply voltages and frequencies, including DC.

Digital Metering



Product Features

- DIN 96x48mm or 48x24mm sizes
- 3½ digit red LED display for high visibility
- Available to measure A~, V~, A, V, Hz, W, Var or cosØ
- Digital Trip Unit also available with Hi & Lo setpoints

Digital meters are available in two DIN sizes, 96x48mm and 48x24mm, to measure a wide range of electrical parameters including Amps, Volts, Frequency, Power (Watts or Vars) and Power Factor. The digital meters have a 3½ digit red LED display and the larger model is available with adjustable Hi and Lo setpoints. Many further options are also available to meet specific requirements of industrial applications.

Energy Monitoring



Product Features

- DIN square 96mm panel mounting or DIN rail mounting
- Single phase and 3 phase, balanced and unbalanced versions
- Programmable CT and PT ratios
- Pulsed output option available

Energy meters measure energy consumption (kWh) and are available in DIN square 96mm panel mounting and DIN rail mounting versions. Models are available for single phase and three phase, balanced and unbalanced loads as well as DC systems. The kWh meters are accurate to class 1.0 to IEC1036 and AC models have a user selectable CT ratio. All meters are available with an optional voltage free pulsed output.

Multifunction Monitoring

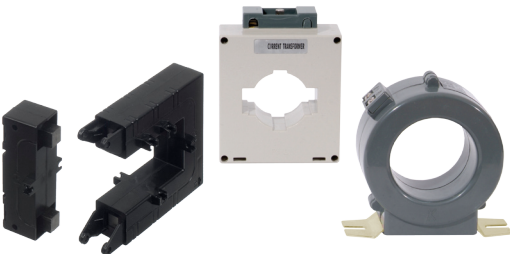


Product Features

- Measures over 30 electrical parameters in one instrument
- DIN96 enclosure with large backlit LED display
- Programmable CT/VT ratios and optional pulse/alarm outputs
- RS-485 communication with free software

Multifunction monitors are instruments capable of measuring over 30 parameters of a three phase electrical system. The instruments have a custom LCD display and 4 keys to select the parameters displayed and for programming. Two optional output relays can be programmed as energy pulse outputs or alarm setpoint outputs. The meters have a serial port allowing RS-485 communication for transmission of the measured values to a computer or PLC.

Current Transformers

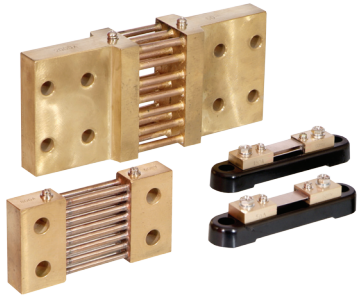


Product Features

- Ring, busbar or split core versions
- Moulded ABS enclosed or resin encapsulated
- Ratios from 5/5A to 3000/5A and 5/1A to 400/1A
- Accuracy class 1.0

A wide range of current transformers are available to measure high primary currents and provide a proportional 1 Amp or 5 Amp output. Available in ring type, busbar type or split core versions, the transformers are accurate to class 1.0. All CT's are either ABS enclosed or resin encapsulated ensuring suitability for industrial applications. An optional terminal cover and busbar clamp are available for the ring type CT's and are standard with the other CT's.

DC Shunts

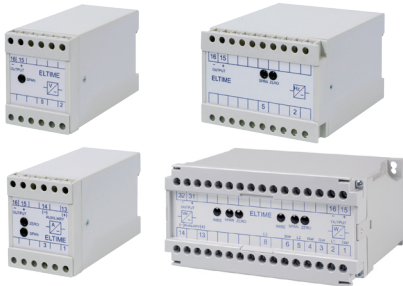


Product Features

- Brass ended manganin shunts
- 10 Amp to 5000 Amp
- 50mV or 60mV output versions available
- Accuracy class 0.5

A range of shunts are available to measure DC currents and provide a proportional 50 or 60mV DC output to safely drive a moving coil instrument, overload protection or other control device. The shunts are accurate to class 0.5 and are suitable for all DC current monitoring applications. The manganin shunts have brass ends and are available to measure currents from 10A up to 5000A. All shunts rated up to 200A are mounted on an insulating base.

Electronic Measurement Transducers

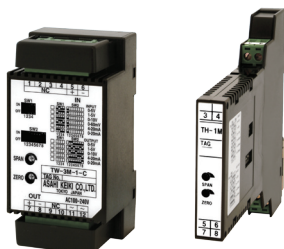


Product Features

- Available to measure A~, V~, W, Var, kWh, ϕ , cos ϕ , Hz, A & V
- Isolated DC mA or DC voltage output with adjustable span/zero
- DIN rail mounting enclosure
- Accuracy class 0.25

A range of transducers are available which convert the input to an industry standard DC mA, DC voltage or voltage free pulsed output, directly proportional to the input signal. Models are available to measure electrical parameters including Amps, Volts, Power (Watts or Vars), Energy (kWh), Phase Angle, Power Factor and Frequency. The isolated output signals can then be fed to analogue or digital instruments, PLC's or building management systems.

Analogue Signal Conditioners



Product Features

- Isolate and convert process signals
- User selectable input and output through DIP switches
- Isolated input / output / power supply
- DIN rail mounting

Analogue signal conditioners isolate and convert a DC voltage or DC mA input signal to either a DC mA or DC voltage output, directly proportional to the input signal. The user can select the input range and output range through DIP switches on the front of the isolator. Isolation between the DC input signal and the DC output can be used to prevent earth loops. The 1.5kV isolated output signals can then be fed to analogue or digital instruments or PLC's.

Electronic Protection Relays

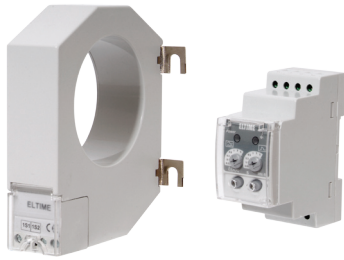


Product Features

- Monitor and protect against over/under fault conditions
- Single or double pole output
- Available with built-in timers
- DIN rail mounting

Electronic protection relays monitor and protect a wide range of electrical system parameters. The relays include phase failure, voltage, current, frequency, DC and reverse power protection. Accurate repeatability, stability and long term switching reliability make the protection relays suitable for many industrial applications. The relays are DIN rail mounting, available with built in timers and with 1 or 2 change-over contacts. Front panel LEDs indicate trip status.

Earth Leakage Relays and Core Balance Transformers



Product Features

- 3 phase earth leakage protection
- 30mA to 5A trip current
- Instantaneous to 5 second adjustable delay
- Reset and test functions

Earth leakage relays monitor the leakage of current to earth on 3 phase electrical systems. The relay is used in conjunction with a core balance transformer which are available in five different sizes to cover all system sizes. The relays have either a fixed 30mA or 300mA instantaneous trip point or a user adjustable trip point and time delay. All relays have reset and test functions, two LED's to indicate both power and trip status and are DIN rail mounting.

Electronic Timers



Product Features

- Single function or multifunction versions
- Time ranges from 1 second to 10 hours
- Operating voltages from 12 to 110Vdc and 24 to 415Vac
- DIN rail mounting

A range of electronic timers offering high timing accuracy, long term switching reliability and a wide variety of timing functions ensuring suitability for many industrial applications. Single function models are available as well as a multi-function, multi-time range, multi-voltage model. The timers are DIN rail mounting with adjustable time ranges from 1 second to 10 hours and have an isolated relay output. Front panel LED's indicate power connection and relay status.

Timeswitches



Product Features

- 24 hour and 7 day analogue versions
- Digital LCD single channel and 2 channel versions
- Quartz accuracy and battery reserve
- Panel, surface or DIN rail mounting

Timeswitches are available suitable for many industrial applications because of their accuracy and ease of installation and operation. Different models are available for panel, surface or DIN rail mounting, powered from a variety of AC and DC power sources. The timeswitches have a battery reserve so a temporary power loss does not interfere with programme settings. All models have a voltage free change-over relay contact and include a manual override facility.

Selector Switches



Product Features

- Ammeter or voltmeter selector switches
- Panel mounting 48mm x 60mm
- Wide range of legend plates available
- Custom legend plates also available

A range of rotary selector switches offering reliability and durability which are suitable for electrical and industrial applications. The standard panel mounting ammeter and voltmeter selector switches measure 48mm x 60 mm and have a 6 Amp switch rating. Each switch is available with a selection of legend plates which cover most applications, however custom legend plates are also available.

Schrack Plug-in Relays and Bases



Product Features

- Schrack octal (2c/o), 11-pin (3c/o) and 14-pin (4c/o) relays
- Contacts rated up to 16 Amps
- Wide range of coil voltages from 12Vdc to 230Vac
- DIN rail mounting bases also available

Schrack plug-in relays available for a wide range of DC and AC voltages which offer reliable, long life performance for many industrial applications. The relays have cadmium-free contacts and offer a high switching current capability. The octal, 11-pin and 14-pin versions have a mechanical indicator and push-to-test and latch system. A range of DIN rail mounting relay bases are also available which have self opening rising clamp terminals with captive screws.



GENERATOR
NO. 3

100 200 300



Eltime Controls: Hall Road, Maldon, Essex, CM9 4NF UK.

Telephone: +44(0)1621 859500 Fax: +44(0)1621 855335 Email: sales@eltime.co.uk Web: www.eltime.co.uk

ELTIME CONTROLS

Eltime Controls is a division of Eltime Ltd.