

High-Pressure Portable Pump

Description

The major components of the high-pressure portable pump assembly in the 9911 model series consist of a(n):

- air-operated motor
- double-acting reciprocating pump tube
- control valve assembly, z-swivel, and delivery hose
- cover assembly
- container with two-wheel hand cart (model 9911-A1)
- container with handles (model 9911-B1)

Pump Assembly

The high-pressure (50:1 ratio) pump included with the assembly is designed to deliver a range of greases [up to NLGI # 3] directly from the 70-pound (31.8 kg) container.*

Models 9911-A1 and 9911-B1

Model 9911-A1 includes a two-wheel hand cart that automatically levels the container. Carrying handles are included on model 9911-B1. See **Figures 1** and **2**.

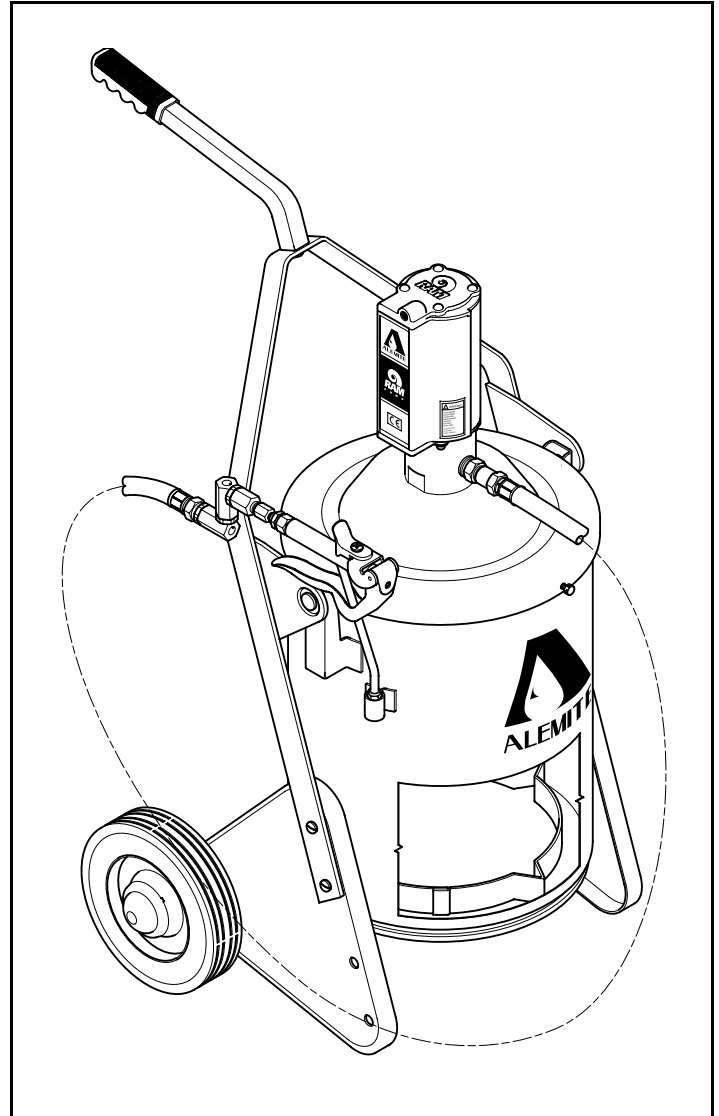
NOTE: The follower plate is not included with these models. See **Table 2**.

Specifications

IMPORTANT: For detailed information on the pump tube (including specifications and performance data) refer to SER 9911-1/9950-1.

For information on the motor, please refer to SER 339413.

* Product can also be dispensed directly from an original 35-pound container with the use of a spacer ring.



Pump Model	Container	Model Weight		Width x Height	
		lbs	kg	Inches	Cm
9911-A1	w/ hand cart	46	20.9	23 x 40-1/2	58.4 x 103
9911-B1	w/ handles	36	16.4	19-1/4 x 27	48.9 x 68.6

Figure 1 High-Pressure Portable Pump
Models 9911-A1 and 9911-B1 - Model 9911-A1 Shown

Alemite Corporation
167 Rowland Drive, Johnson City, Tennessee 37601
www.alemite.com

Copyright © 2004 by Alemite Corporation

This document contains confidential information that is the property of Alemite Corporation and is not to be copied, used, or disclosed to others without express written permission.

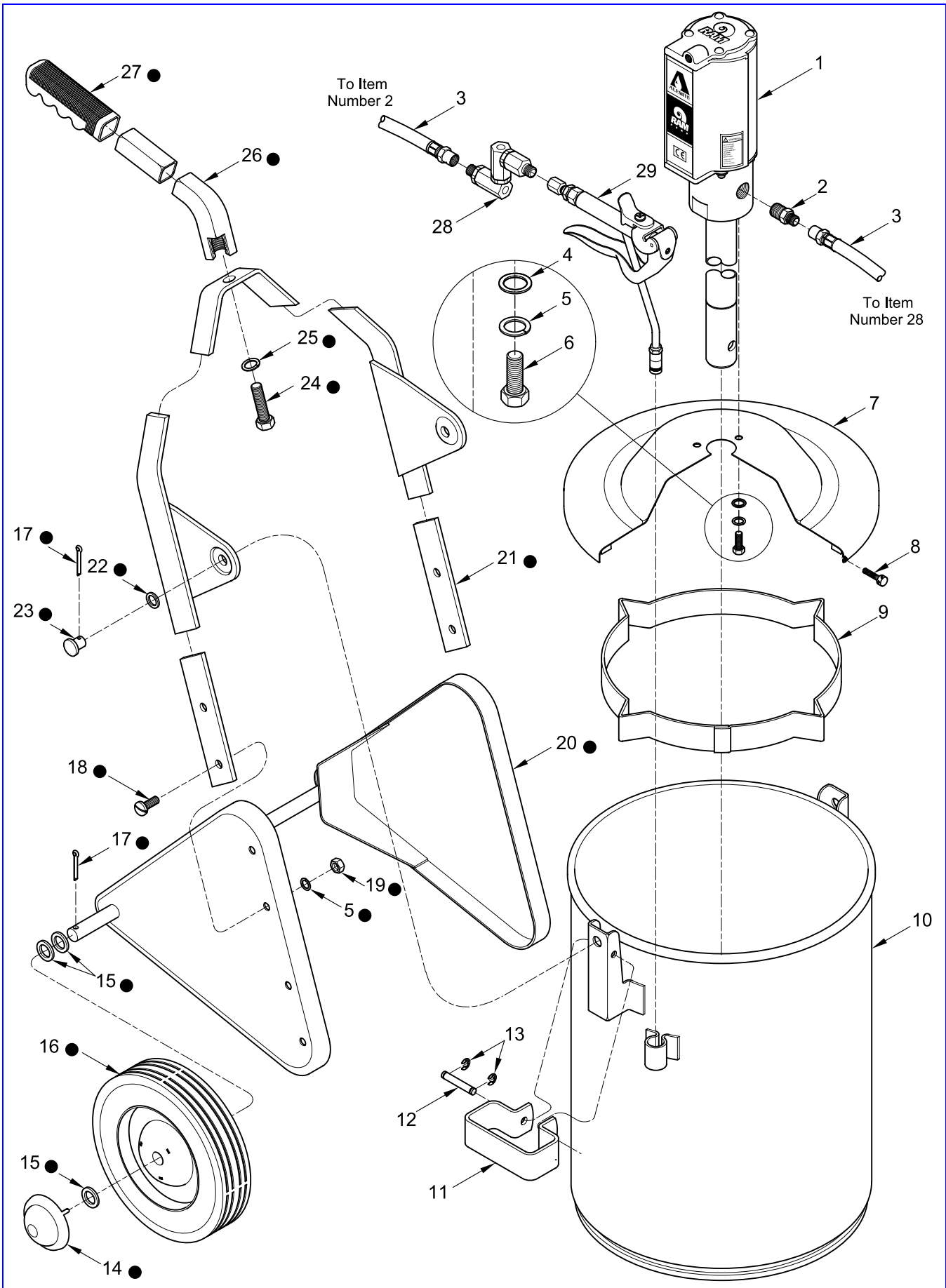


Figure 2 High-Pressure Portable Pump Models 9911-A1 and 9911-B1 - Exploded View

Item No.	Part No.	Description	Qty	Notes	Numeric Order Part # (Item #)
1	9911-R1	Pump Assembly, High-Pressure	1		9911-R1 (1)
2	44734	Adapter, 1/2 " -27 x 3/8 " NPTF (m)	1		<i>17804</i> (4)
3	317875-7	Hose Assembly, Material	1		6320-3 (29)
4		Washer, 1/4 "	3		44734 (2)
5		Washer, Lock, 1/4 "	7	● Qty of (4) in Kit	48018 (8)
6		Capscrew, 1/4 " -20 x 1/2 "	3		52752 (28)
7	323496-A4	Cover and Gasket Assembly	1		<i>77450-2</i> (22)
8	48018	Screw, Thumb, 1/4 " -28 x 0.88 "	3		<i>77650</i> (19)
9	317559	Ring, Spacer (for 35-pound container)	1		<i>77786</i> (6)
10	338381	Container (70-pound [31.8 kg])	1		<i>79713</i> (24)
11		Handle	2		<i>131209</i> (15)
12	339961-3	Pin	2		<i>170347</i> (18)
13		Ring, Retaining	4		<i>171606</i> (13)
14	324395	Cap, Hub	2	●	<i>172207-1</i> (5)
15		Washer, 0.51 " Dia.	6	●	<i>172207-4</i> (25)
16	337997	Wheel	2	●	<i>172212-16</i> (17)
17		Pin, Cotter, 1/8 " Dia. x 1 "	4	●	<i>317558-C4</i> (20)
18		Screw, 1/4 " -20 x 5/8 "	4	●	317559 (9)
19		Nut, 1/4 " -20	4	●	<i>317595</i> (23)
20		Frame Assembly	1	●	317875-7 (3)
21	332901-B4	Fork Assembly	1	●	<i>318414</i> (11)
22		Washer, 3/8 "	2	●	323496-A4 (7)
23		Pin, 0.355 " Dia. x 11/16 " Long	2	●	324395 (14)
24		Bolt, 1/2 " -13 x 1-1/4 "	1	●	332901-B4 (21)
25		Washer, Lock, 1/2 "	1	●	333001 (26)
26	333001	Handle Assembly	1	●	337997 (16)
27		Grip (Rubber)	1	●	<i>338334</i> (27)
28	52752	Z-Swivel Assembly, High-Pressure	1		See SER 52750 338381 (10)
29	6320-3	Valve Assembly, High-Pressure Control	1		See SER 6320-3 339961-3 (12)

Legend:Part numbers left blank (or in *italics*) are not available separately

● designates a repair kit item

Repair Kit

Part No.	Kit Symbol	Description
393629	●	Kit, Hand Cart

Assembly

NOTE: Refer to **Figure 2** for component identification on assembly procedures.

Hand Cart Assembly

1. Remove Bolt (24), Lock Washer (25) and Handle Assembly (26) from Fork Assembly (21) [as shipped].
2. Position the Handle Assembly on top of the Fork Assembly.
3. Screw the Bolt with Lock Washer into the Handle Assembly from the bottom of the Fork Assembly.
 - Tighten the Bolt securely.

Follower Plate (Not Included)

4. Loosen Thumb Screws (8) that secure Cover Assembly (7) to Container (10).
5. Remove the Cover and Pump Assembly from the Container.
6. Install the 35-pound container into Spacer Ring (9).

NOTE: When bulk filling Container (10), remove the Spacer Ring and fill the Container with product. Do not allow air to mix with the product during the filling process. Pump may lose prime.

7. Place the follower plate onto the top of the product. See **Table 2**.
 - With a wobbling motion, eliminate any air that may be trapped underneath the follower plate. Force the product through the hole in the center of the plate.
8. Guide the pump tube into the follower plate and fit the Cover onto Container (10).
9. Secure the Cover to the Container with Thumb Screws (8).
10. Test/Prime the Pump assembly.
 - Refer to Service Guide SER 9911-1/9950-1 for details.

Accessories

Accessory items available for these pumps are listed in **Table 2**.

Part Number	Description
337665	Follower Plate (for 35-pound container)
338801	Follower Plate (for 70-pound container)

Table 2 *High-Pressure Portable Pump Accessories*

Changes Since Last Printing
Deleted Air Motor Body Check Valve