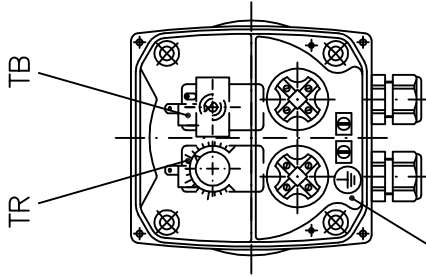
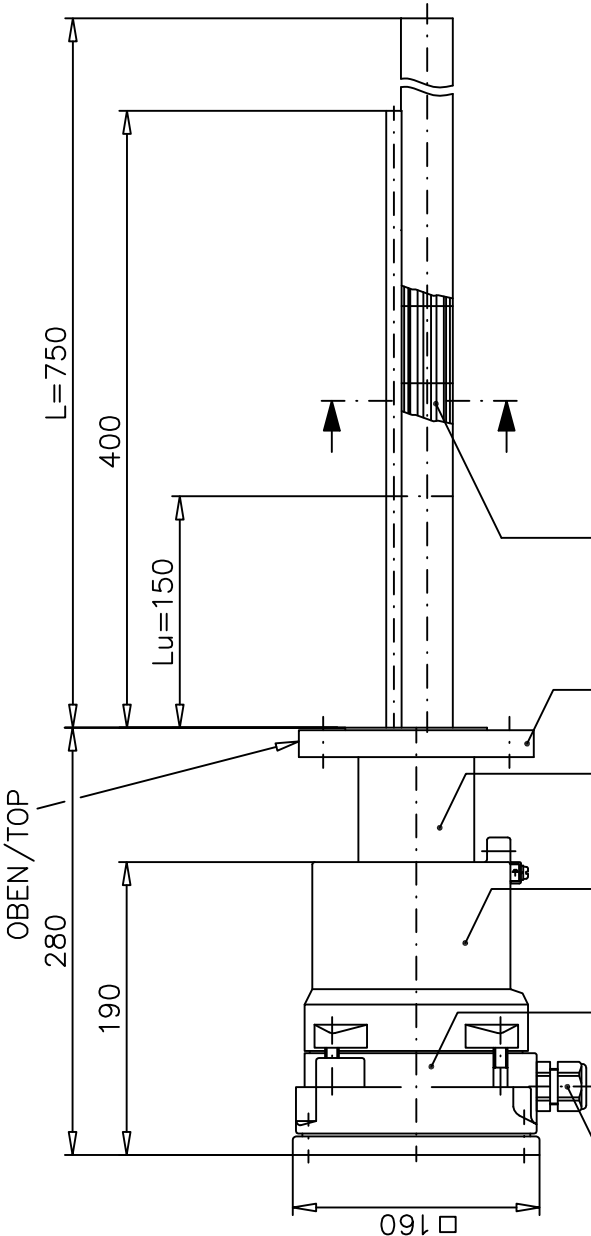
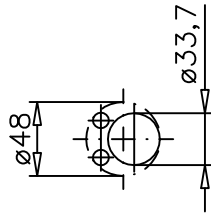


Ansicht ohne Anschlussgehäusedeckel  
View without connection box cover



Elektrischer Anschlußraum  
Electrical connection box



Heizeinsatz in Patronenform mit  
auswechselbarem Keramik-Gliederheizkörper  
Heating inset cartridge type with  
exchangeable ceramic heating element

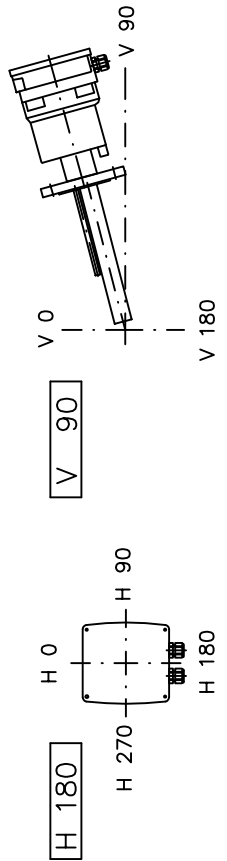
Flansch / Flange ASME B16.5 2" CL.150 RF

Bundhülse / Flange bushing

Ex d IIC druckfest gekapseltes Gehäuse / Flameproof enclosure

Ex e Anschlussgehäuse / Connection enclosure

Kabelverschraubungen / Cable glands 2x M25x1,5



Einbaulage waagrecht  
"OBEN" markiert

Mounting position horizontal  
"TOP" is marked